



ColorEdge® Creator Edition

Color Calibration LCD Monitors

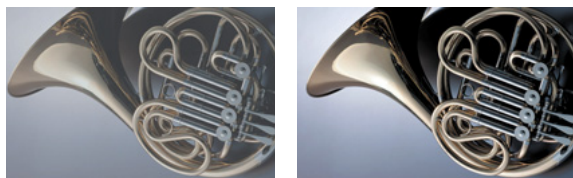


*Accurate color matching with
hardware calibration*

rated for smooth grayscale rendering. The result is a great degree of detail, especially in dark areas of an image.

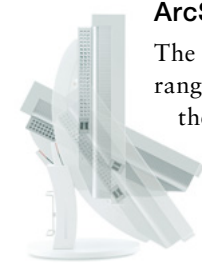
1000:1 Contrast Ratio

This outstanding contrast performance makes images on dark backgrounds appear more vivid, brings out the subtle differences in similar shades of color, and ensures that colors retain their richness even in brightly lit rooms.



500:1

1000:1



ArcSwing 2 Stand

The innovative stand offers a curved range of movement so you can adjust the screen to various positions such as at an angle akin to reading a book. It also has a compartment in the back for cable management.

Touch Sensitive Switches

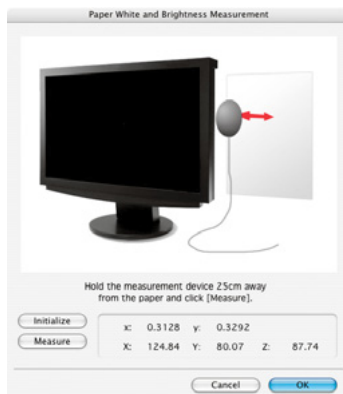
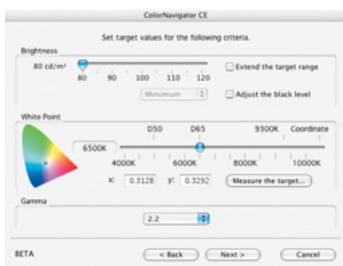
Sensitive electrostatic “touch” switches on the front panel present a sophisticated appearance and are easier to engage than the small buttons of most LCD monitors.



Simple and Precise Calibration

The EIZO-developed ColorNavigator CE software makes calibration both simple and accurate. Just set the target values for brightness, white point, and gamma. ColorNavigator CE works with the measurement device to directly utilize the monitors’ 10-bit look-up table for accurate calibration in less than five minutes. When calibration is complete the settings can be saved as an ICC profile.

ColorNavigator CE offers a paper white measurement



function for color matching between the image on the monitor and the image on the printouts. By measuring the white of the paper to be used for printing, ColorNavigator CE will automatically set the target values for brightness and white point accordingly.

The paper white measurement function is compatible with the X-Rite DTP94, DTP94B, Eye-One Display 2, Eye-One Display LT, and Eye-One Pro only.

Accessories

CH3

Monitor Hood

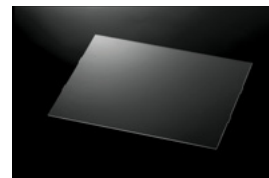
EIZO’s monitor hoods not only prevent ambient light from reflecting off the screen, but include added conveniences like a sliding top cover and an interior made of anti-glare material.



FP-2400W/FP-2100W

Panel Protectors

These protectors slide over the screen surface, allow more than 90% light transmission, and have both anti-glare and glossy sides.



ScreenCleaner

Screen Cleaner Kit

Keep your screen free from dust and fingerprints with this screen cleaner kit. Includes pump spray and cloth.



ColorNavigator CE Compatible Measurement Devices

ColorNavigator CE supports the following devices.

X-Rite

MonacoOPTIX^{XR}/MonacoOPTIX^{XR} Pro
DTP94/DTP94B
Eye-One Series*

ColorVision

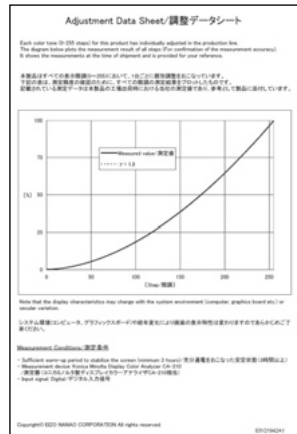
Spyder2 Series

**Eye-One Display LT is supported with Macintosh OS 10.3.9 or later only.*

If your work involves digital photography, graphic art, digital intermedia, or any field where accurate color is important, the EIZO ColorEdge Creator Edition (CE) monitors are an excellent choice. Since color values are hardware calibrated, they offer a significant advantage over monitors that provide only software calibration. With the ColorEdge CE monitors, you get accurate, consistent color reproduction that matches the colors captured by your digital camera, or that you see on your prints. The ColorEdge CE monitors: your assurance of color profiling with professional-level precision.

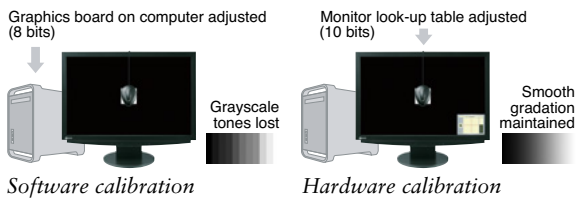
Factory Adjustment of Gamma

Each color tone from 0 – 255 is measured on the production line to produce a gamma value of 2.2 and ensure color is displayed consistently on every ColorEdge CE monitor. Each monitor comes with an adjustment certificate that certifies the measurement results of the gamma value.



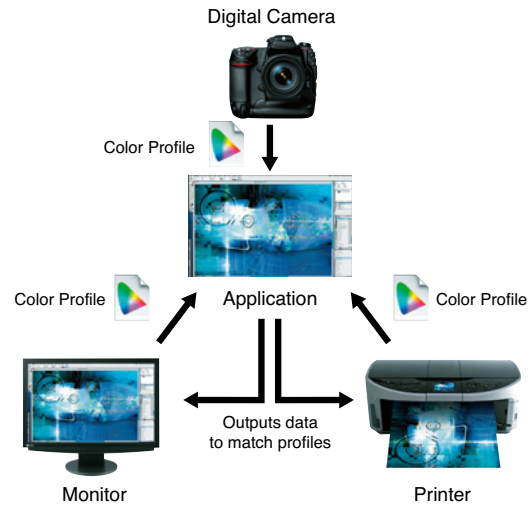
Accurate Hardware Calibration

There are two kinds of monitor calibration – software and hardware. With software calibration, colors are adjusted by manipulating the graphics board’s color output, which results in fewer displayable colors. With hardware calibration, colors are adjusted by within the monitor itself, so there is no loss of displayable tonalities. ColorEdge CE and the bundled ColorNavigator CE software offer hardware calibration for accurate and consistent color.



Color Profiling

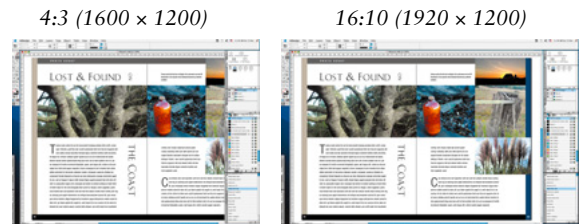
The color characteristics of monitors, printers, and other peripherals can be written to a color profile. The image editing application refers to these profiles to ensure color matching when outputting data to each peripheral. Naturally, the more accurate the profiling is the better the matching will



be. Hardware calibration ensures the most accurate color profiling.

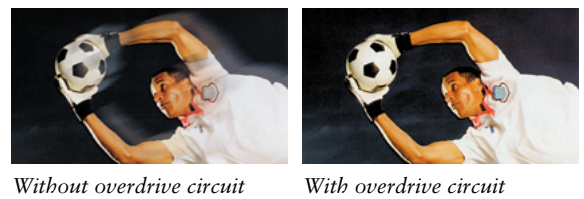
Widescreen Format

Both monitors employ a wide 16:10 aspect ratio. The increased horizontal space this affords means you can open two windows and have room for your tool palettes without any overlap.



Fast Response Time

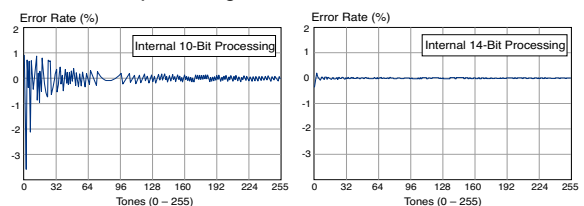
To ensure that movies, animation and other moving images look clean and sharp with an absolute minimum of blurring and ghosting, an overdrive circuit is included for a midtone response time of only 8 ms.



14-Bit Processing

A powerful EIZO-developed integrated circuit with 14-bit color processing capability is incorpo-

10-bit v. 14-bit processing



With 10-bit processing, the error rate is high in low tonal areas during calculation. With 14-bit processing, accuracy is significantly improved resulting in fewer conversion errors.



Specifications

ColorEdge® CE240W

ColorEdge® CE210W

Panel	Size and Type	61 cm (24.1") TFT color LCD panel	53 cm (21.1") TFT color LCD panel
	Viewing Angles (H, V)	178°, 178° (at contrast ratio of 10:1)	178°, 178° (at contrast ratio of 10:1)
	Brightness / Contrast	450 cd/m ² / 1000:1	450 cd/m ² / 1000:1
	Response Time	16 ms (typical)	16 ms (typical)
	Midtone Response Time	8 ms ¹	8 ms ¹
	Native Resolution	1920 × 1200	1680 × 1050
	Active Display Size (H × V)	518.4 × 324.0 mm	453.6 × 283.5 mm
	Viewable Image Size	Diagonal: 611 mm	Diagonal: 534 mm
	Pixel Pitch	0.270 × 0.270 mm	0.270 × 0.270 mm
	Display Colors	16.77 million from a palette of 1.06 billion	16.77 million from a palette of 1.06 billion
Look-Up Table	10-bits per color	10-bits per color	
Internal Processing	14-bits per color	14-bits per color	
Available Cabinet Colors		White, Black	White, Black
Dot Clock		Analog: 202.5 MHz, Digital: 162 MHz	Analog: 150 MHz, Digital: 120 MHz
Scanning Frequency (H, V)	Analog	24 – 94 kHz, 49 – 86 Hz	24 – 82 kHz, 49 – 86 Hz
	Digital	31 – 76 kHz, 59 – 61 Hz (VGA Text: 69 – 71 Hz)	31 – 65 kHz, 59 – 61 Hz (VGA Text: 69 – 71 Hz)
Input Signals		Analog: RGB Analog, Digital: DVI Standard 1.0	Analog: RGB Analog, Digital: DVI Standard 1.0
Input Terminals		DVI-I 29 pin × 2 (switchable)	DVI-I 29 pin × 2 (switchable)
USB Ports / Standard		1 upstream, 2 downstream / USB Standard Rev. 2.0	1 upstream, 2 downstream / USB Standard Rev. 2.0
Plug & Play		VESA DDC 2B	VESA DDC 2B
Power	Power Requirements	AC 100 – 120 V, 200 – 240 V: 50 / 60 Hz	AC 100 – 120 V, 200 – 240 V: 50 / 60 Hz
	Power Consumption	110 W (maximum)	80 W (maximum)
	Power Save Mode	Less than 2 W	Less than 2 W
Physical Specifications	Height Adjustment Range	95 mm	95 mm
	Tilt / Swivel / Pivot	60° Up, 5° Down / 172° Right, 172° Left / –	60° Up, 5° Down / 172° Right, 172° Left / –
	Dimensions (W × H × D)	With Stand: 566 × 358.7 – 480 × 230 mm Without Stand: 566 × 396 × 85 mm	With Stand: 501 × 341.1 – 459.5 × 230 mm Without Stand: 501 × 355 × 85 mm
	Net Weight	With Stand: 10.2 kg, Without Stand: 7.8 kg	With Stand: 8.2 kg, Without Stand: 5.8 kg
Auto Brightness Functions		Auto Brightness Stabilization	Auto Brightness Stabilization
Auto Adjustment Function (Analog Only)		Auto Adjustment	Auto Adjustment
Display Mode Options		Fine Contrast (sRGB, Custom, CAL)	Fine Contrast (sRGB, Custom, CAL)
Certifications and Standards		TCO'03, TÜV/Ergonomics (including ISO 13406-2), TÜV/GS, c-Tick, CE, CB, UL (cTÜVus), CSA (cTÜVus), FCC-B, Canadian ICES-003-B, TÜV/S, VCCI-B, EPA ENERGY STAR®, RoHS, WEEE, CCC, EIZO Eco Products 2004	
Supplied Accessories		AC power cord, signal cables (DVI-D - DVI-D, DVI-I - DVI-I), USB cable, EIZO LCD Utility Disk (ColorNavigator CE, user's manual, ICC Profile) adjustment certificate, warranty registration card	
Warranty		Five Years ²	Five Years ²

¹ Average response time measured between each grayscale level of 31, 63, 95, 127, 159, 191, and 223. ² The usage time is limited to 30,000 hours or less, and the warranty period of the LCD panel and backlight is limited to three years from the date of purchase.
With current LCD technology, a panel may contain a limited number of missing or flickering pixels.

Calibration Parameters

Brightness		50 cd/m ² – 400 cd/m ² in 5 cd/m ² increments
	Black Level	Digital: 0.2 cd/m ² – 3.5 cd/m ² in 0.1 cd/m ² increments*
White Point	Color Temperature	4,000 K – 10,000 K in 100 K increments
	Color Coordinates	x Value, y Value
Gamma		Digital: 1.0 – 2.6 in 0.1 increments
		Analog: 1.8 – 2.6 in 0.1 increments

* Black level adjustment is not available in an analog connection.

ColorNavigator CE System Requirements

Compatible Operating Systems	Macintosh	Mac OS X 10.2 or later/OS 9.2.2
	Windows	Windows Vista/XP Professional x64 Edition/XP/2000
Colors	32,000 minimum	
Resolution	1024 × 768 minimum recommended	
Additional Requirements	<ul style="list-style-type: none"> PowerPC compatible CPU (except iBook) Intel compatible CPU 	
	Two or more available USB ports	